



Lyrics

MAJESTUOSA PRESENCIA

Letra y Música: Frank Lopez, Ernesto Garcia. IWC MUSIC, BMI

VERSO

**Majestuosa es la presencia del Rey
En sus manos todo vuelve a nacer
Hay poder y gloria en abundancia
Me siento amado, soy aceptado**

CORO

**Padre de misericordia
Defensor de Los pequeños
Dios de Paz, Dios de victoria
Señor de la creación**

BRIDGE

**Majestuoso Salvador
Poderoso redentor
Heme aqui.**



Jesus Worship Center Music
9000 NW 15th Street, Miami, Florida 33172
Ph 305.594.9160 * Fax 305.594.9195
Email: music@jesusworshipcenter.org
www.jesusworshipcenter.org



Electric Guitar

MAJESTUOSA PRESENCIA

Electric Guitar

JWC MUSIC

Letra y Música: Frank Lopez, Ernesto Garcia. IWC MUSIC, BMI

Intro...

4 F / Dm Bb

Verse...

9 Verse... Verse... 8 A B F Bb/D F Dm Bb F C Gm7 C Dm

Chorus...

24 C C F C/E Dm Bb F C/E F/A Bb

Re-Intro...(play band)

33 F / Dm Bb Verse... D F Bb/D F Dm Bb

Verse...

40 F C Gm7 1. C Dm C 2. C/E Dm C

Chorus...

47 E F C/E Dm Bb F C/E F/A Bb Gm

Bridge...

56 Dm C Bb F F Cm7 Ebmaj7 Bb

Chorus...

63 G F Cm7 Ebmaj7 Bb

67 H F Cm7 Ebmaj7 Bb F Cm7 Ebmaj7 Bb



Bass

MAJESTUOSA PRESENCIA

Electric Bass

JWC MUSIC

Letra y Música: Frank Lopez, Ernesto Garcia. IWC MUSIC, BMI

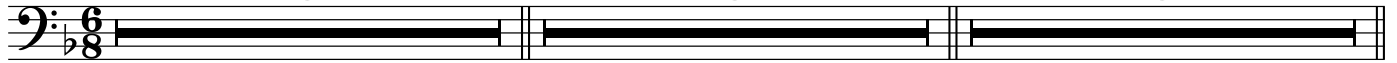
Intro...
8

A

Verse...
8

B

Verse...
8



Chorus...

25 **C** F C/E Dm B \flat F C/E F/A B \flat



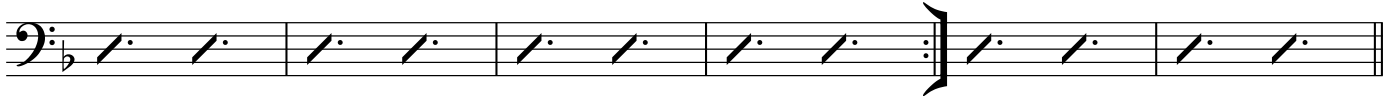
Re-Intro...(play band)

Verse...

33 F r Dm B \flat **D** F B \flat /D F Dm B \flat F

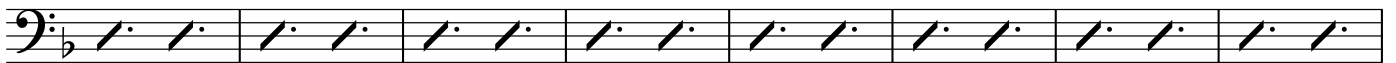


41 C Gm 7 1. C Dm C 2. C/E Dm C



Chorus...

47 **E** F C/E Dm B \flat F C/E F/A B \flat



Bridge...

55 Gm Dm C B \flat **F** F Cm 7 E \flat maj 7 B \flat



Chorus...

63 **G** F Cm 7 E \flat maj 7



67 **H** F Cm 7 E \flat maj 7 B \flat F Cm 7 E \flat maj 7 B \flat





Piano

MAJESTUOSA PRESENCIA

Piano

JWC MUSIC

Letra y Música: Frank Lopez, Ernesto Garcia. IWC MUSIC, BMI

Intro...

Musical notation for the Intro section, measures 1-8. The key signature is one flat (Bb) and the time signature is 6/8. The notation shows chords in the right hand and a bass line in the left hand. Chords are: F, Bb/D, F, Dm, Bb, F, Dm, Bb.

Verse...

9 **A**

Musical notation for Verse A, measures 9-16. The key signature is one flat (Bb) and the time signature is 6/8. The notation shows chords in the right hand and a bass line in the left hand. Chords are: F, Bb/D, F, Dm, Bb, F, C, Gm7, C, Dm, C.

Verse...

17 **B**

Musical notation for Verse B, measures 17-24. The key signature is one flat (Bb) and the time signature is 6/8. The notation shows chords in the right hand and a bass line in the left hand. Chords are: F, Bb/D, F, Dm, Bb, F, C, Gm7, C, Dm, C.

Chorus...

25 **C**

Musical notation for Chorus C, measures 25-32. The key signature is one flat (Bb) and the time signature is 6/8. The notation shows chords in the right hand and a bass line in the left hand. Chords are: F, C/E, Dm, Bb, F, C/E, F/A, Bb.

Re-Intro...(play band)

33

Musical notation for Re-Intro, measures 33-36. The key signature is one flat (Bb) and the time signature is 6/8. The notation shows chords in the right hand and a bass line in the left hand. Chords are: F, Bb/D, F, Dm, Bb.

Verse...

Piano

37

D

Musical notation for Verse... starting at measure 37. The key signature has one flat (Bb). The music is in a piano accompaniment style. Chords are indicated above the staff: F, Bb/D, F, Dm, Bb, F, C, Gm7.

Chorus...

43

E

Musical notation for Chorus... starting at measure 43. It includes a first ending (1.) and a second ending (2.). Chords are indicated above the staff: C, Dm, C, C/E, Dm, C, F, C/E, Dm, Bb.

51

Musical notation for Chorus... starting at measure 51. Chords are indicated above the staff: F, C/E, F/A, Bb, Gm, Dm, C, Bb.

Bridge...

59

F

Musical notation for Bridge... starting at measure 59. The melody is in the right hand. Chords are indicated below the staff: F, Cm7, Ebmaj7, Bb.

Chorus...

63

G

Musical notation for Chorus... starting at measure 63. Chords are indicated below the staff: F, Cm7, Ebmaj7, Bb.

67

H

Musical notation for Chorus... starting at measure 67. Chords are indicated below the staff: F, Cm7, Ebmaj7, Bb, F, Cm7, Ebmaj7, Bb.